

## INSTALLATION AND SPECIFICATION GUIDE

Page 2	Contents
Page 3	Product Technical Statement - PASS
Page 4	PASS
Page 5	Product Description
Page 6	Typical Uses
Page 7	NZBC compliances
Page 8	Panel Types
Page 9	Decors
Page 10	Jointers
Page 11	Scope, Timber Framing, Lined Walls, Shower Linings
Page 12	Fixing with adhesives, Materials required, Tools required
Page 13	Preparation - Edge Grooves
Page 14	Installation - Aluminium Jointers
Page 15	Installation - Flushfit jointers, Silicon joints, Dry areas
Page 16	Wall and Ceiling Junctions
Page 17	Flushfit jointers
Page 18	Internal Corner, External corner
Page 19	Ceiling and Floor
Page 20	Flushfit corner setout
Page 21	Wet Area floor coverings, vinyl flooring
Page 22	Tiled floors and upstands
Page 23	Shower Tray, S/Steel, Acrylic
Page 24	Bath edge
Page 25	Splashbacks
Page 26	Maintenance, Storage and handling, Packaging and labelling
Page 27	Panel specifications and tolerances
Page 28	Warranty

## HYDRAPANEL LINING PANEL

### PURPOSE

The Hydrapanel lining panel (the panel) is supplied by Hydrawood Flooring Systems Ltd for use as a non-structural, internal wall or ceiling lining in wet or dry areas.

### EXPLANATION

The panels are 7.6 mm thick, laminated on the outer faces in a sandwich construction with a decorative high-pressure laminate. The core is magnesium oxide. The outer faces are abrasion-resistant, easily cleaned and maintained, and impervious to moisture and steam.

The following panel sizes are available:

- ▶ Flushfit – 2400 mm x 1200 mm and 3000 mm x 1200 mm
- ▶ Subway Tile – 2400 mm x 1200 mm, with a 300 mm x 100 mm pattern
- ▶ Tile – 2400 mm x 1200 mm, with a 600 mm x 300 mm pattern.

The panel can be installed with a proprietary aluminium track or a Flushfit jointer system. They can also be bonded to timber, lightweight steel, masonry, concrete and engineered panel substrates provided the substrates are clean, dry and free of contaminants.



For further assistance please contact:

☎ +64 9 3651660

✉ info@hydrawood.co.nz

🌐 [hydrapanel.co.nz](http://hydrapanel.co.nz)

### SCOPE AND LIMITATIONS OF USE

Scope	Limitations
<b>Building</b>	
In all buildings where the relevant structure complies with the NZ Building Code or, for existing buildings, where the designer and the installer have satisfied themselves that the existing structure is suitable for the intended building work.	
On timber or lightweight steel framing, and masonry, concrete and engineered panel substrates.	<ul style="list-style-type: none"> <li>▶ The substrates must be clean, dry and free from contaminants including dust.</li> <li>▶ The panels must be installed to concrete walls using timber battens with a DPC installed between the timber and concrete surface.</li> </ul>
As a wall lining (vertical or horizontal).	▶ Studs or nogs must be at a maximum of 600 mm centres.
As a ceiling lining.	▶ Battens must be at a maximum of 400 mm centres.
In buildings of any use.	▶ Where a material group number 2 or greater is permitted.



### USEFUL INFORMATION

For design, installation and maintenance information, refer to [hydrapanel.co.nz](http://hydrapanel.co.nz).

**VERSION:** 1.6

## PERFORMANCE CLAIMS

If designed, installed and maintained in accordance with all Hydrawood Flooring Systems Ltd requirements, Hydrapanel lining panel will comply with or contribute to compliance with the following performance claims:

NZ Building Code clauses	BASIS OF COMPLIANCE	
	Compliance statement	Demonstrated by
<b>B1 Structure</b> B1.3.1, B1.3.2, B1.3.3 (a, j), B1.3.4	ALTERNATIVE SOLUTION	<ul style="list-style-type: none"> <li>➤ The University of Auckland. AS/NZS 2908.2. [03/09/2012].</li> <li>➤ Hydrawood Holdings Limited. Technical specification. [02/09/2019].</li> </ul>
<b>B2 Durability</b> B2.3.1 (b), B2.3.2 (b)	ALTERNATIVE SOLUTION	<ul style="list-style-type: none"> <li>➤ Hydrawood Holdings Limited. Technical specification. [02/09/2019].</li> <li>➤ The University of Auckland. AS/NZS 2908.2. [14/09/2012].</li> </ul>
<b>C3 Fire Affecting Areas Beyond the Fire Source</b> C3.4 (a)	ALTERNATIVE SOLUTION	<ul style="list-style-type: none"> <li>➤ Classified as Group number 2-S [BRANZ, 16/01/2025].</li> </ul>
<b>E3 Internal Moisture</b> E3.3.4, E3.3.5, E3.3.6	ACCEPTABLE SOLUTION E3/AS1	<ul style="list-style-type: none"> <li>➤ High Pressure Laminated referenced in para. 3.1.2, E3/AS1.</li> <li>➤ Hydrawood Holdings Limited. Technical specification. [02/09/2019].</li> <li>➤ The University of Auckland. AS/NZS 2908.2. [14/09/2012].</li> </ul>
<b>F2 Hazardous Building Materials</b> F2.3.1	ALTERNATIVE SOLUTION	<ul style="list-style-type: none"> <li>➤ Shandong Yurui International Trade Co. Ltd Material safety data sheet. Magnesium Oxide Board. [n.d.].</li> <li>➤ Shanghai Changyin Testing Technology Co. Ltd. Material safety data sheet. No. A001R161130002. High Pressure Laminate. [01/12/2016].</li> </ul>
<b>G3 Food Preparation and Prevention of contamination</b> G3.3.2 (a)	ACCEPTABLE SOLUTION G3/AS1	<ul style="list-style-type: none"> <li>➤ High Pressure laminate referenced in para. 1.6 of G3/AS1.</li> </ul>

## SOURCES OF INFORMATION

- Hydrapanel. [11/2024] *Installation and specification guide. Version 4.8.*
- Hydrawood Holdings Limited. [2/09/2019] *Quality Plan Summary.*
- Shandong Yurui International Trade Co. Ltd. [n.d.] *Material safety data sheet. Magnesium Oxide Board.*
- Shanghai Changyin Testing Technology Co. Ltd. [01/12/2016] *Material Safety Data Sheet. No. A001R161130002.*
- The University of Auckland. [03/09/2012] *Report on Bending Strength Test on the basis of AS/NZS 2908.2. Hydrapanel. Test Report: 2908.*
- The University of Auckland. [14/09/2012] *Report on Hydrapanel Water Permeability Test on the basis of AS/NZS 2908.2. Test Report: 2908A.*
- BRANZ. [16/01/2025] FH20348-01-01-C1. Group Number Classification.

SCAN OR CLICK THIS QR CODE TO ACCESS OR REQUEST THE RELEVANT SUPPORTING DOCUMENTATION FOR THIS PASS™.

[hydrapanel.co.nz](http://hydrapanel.co.nz)



1. Where a standard is referenced it is to be read as amended by the acceptable solution or verification method as applicable. 2. Sources of information also include the Building Act 2004 and its regulations, including the Building Code (Schedule 1 of the Building Regulations 1992), Acceptable Solutions and Verification Methods, and relevant cited standards. 3. The product is not subject to a warning or ban under section 26 of the Building Act. 4. For overseas manufacturer details, where applicable, refer to the company that is the holder of this pass™. 5. The quality and assurance that the supplied products meet the performance claims stated in this pass™ are the responsibility of the company that is the holder of this pass™. 6. The availability of the information about the supplied products required to be disclosed under s14G(3) is the responsibility of the company that is the holder of this pass™.

Hydrawood Flooring Systems Ltd confirms that if Hydrapanel Lining panel is used in accordance with the requirements of this pass™ the product will comply with the NZ Building Code and other performance claims set out in this pass™ and the company has met all of its obligations under s14G(2) of the Building Act.

**Date of first issue:** 06/05/2020  
**Date of current issue:** 01/07/2025  
**NZBN:** 9429033626666

Kevin Brunton

Kevin Brunton, Technical Director, TBB confirms that the process used to prepare this pass™ on behalf of Hydrawood Flooring Systems Ltd has been undertaken in accordance with MBIE PTS guidelines and in accordance with the TBB pass™ process which is within the scope of TBB's ISO 9001 certification.

90566D6A68E04C0DCA258AB4001045C0



4 Holdaway Avenue, Northcote, Auckland 0627 ➤ [info@hydrapanel.co.nz](mailto:info@hydrapanel.co.nz) ➤ +64 9 3651660 ➤ [hydrapanel.co.nz](http://hydrapanel.co.nz)

Copyright © 2017, The Building Business Limited (TBB). All rights reserved.

VERSION: 1.6

Uncontrolled in printed format

**Hydrapanel™ is a non-structural wall and ceiling panel lining that is impervious to moisture and resistance to water, steam, abrasion and typical cleaning**

Hydrapanel™ is a non-structural wall and ceiling panel lining that is impervious to moisture and resistance to water, steam, abrasion and typical cleaning materials.

Intended primarily for use in wet areas such as bathrooms and kitchens. Intended also for use in food preparation areas, where the code and health regulations require an impervious surface that will withstand water and chemicals, that is easily maintained and cleaned and are capable of withstanding high use hygienic cleaning.

The panels are also to be used as a decorative pre-finished lining that can withstand high use and require low maintenance.

The panels can be fixed to timber and steel framing, used to cover block work, cover old tired walls just to name a few ideas.

Hydrapanel™ Lining systems consist of a range of pre-finished high-pressure decorative laminate panels and jointing accessories.

Standard finish is white with gloss one side and a matt finish on the other, other colours and patterns can be made on request.

Hydrapanel™ lining systems are suitable for use in wet and dry areas, that require an impervious surface that is sealed and easy to clean and maintain.

Hydrapanel™ lining systems are also suitable for areas that require protection from dirt and germs and can also be used in areas that require strict hygiene, such as food processing and preparation areas.

Hydrapanel™ Lining is a magnesium fireproof board, laminated face and back with High Pressure Laminate as a sandwich construction.

Hydrapanel™ is easy to install. It comes complete with a fashionable range of aluminium moldings and can be installed directly to framing, fitted onto existing linings and be butt joined and sealed. It does not require painting or grouting.

The surface is produced in a hygienic non-porous finish, making this the ideal choice for bathrooms and kitchens of all types.

Hydrapanel™ is lined with High Pressure Laminates, making it suitable for use in environments where children spend significant periods of time, including schools, daycares and healthcare facilities.



### Examples of use

- Pre finished wall and ceiling panels
- Bathrooms
- Showers
- Laundries
- Toilet
- Kitchens
- Kitchen Splashbacks
- Utility Rooms
- Garages
- Retail fit outs
- Cabinetry panels
- Sliding doors
- Display Panels
- Shop Linings
- Food preparation
- Restaurants
- Commercial kitchens
- Industrial Buildings
- Schools
- Public Spaces
- Medical Spaces



## NZBC AS/NZS 2908

### B1 - STRUCTURE

Hydrapanel™ Lining complies with the requirements of B1.3.2, Acceptable solution B1/AS1 Table 1, Shower Linings

### B2 - DURABILITY

Hydrapanel™ Lining are manufactured in accordance with Clause B2 - B2.3.1(b) 15 years, B2.3(c) 5 years - Acceptable solution B2/AS1, Table 1

### C3 - FIRE PERFORMANCE

Hydrapanel™ Lining have a fire classification of group 2-S in accordance with ISO5660 and must be used only where the surface requirements of Acceptable Solution C3/AS1 Table 4.

There are no restrictions on use within detached dwellings, within household units in multi-unit buildings, or outbuildings and ancillary buildings.

### E3 - INTERNAL MOISTURE

Hydrapanel™ Lining complies with the requirements of Clause E3 - section 3.1.2

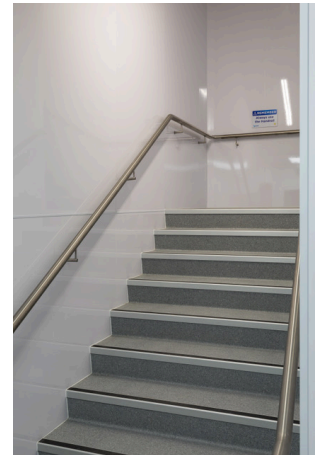
Acceptable Solution E3/AS1 - section 3.1.2 (g), section 3.3.4, 3.3.5, 3.3.6

### G3 - FOOD PREPARATION AND PREVENTION OF CONTAMINATION

Hydrapanel™ Lining complies with the requirements of Clause G3 - G3.3.2 (a)

Acceptable solution G3/AS1 section 1.6, section 2.1.5 / 2.2.3

Hydrapanel™ is not subject to a warning or ban under section 26 of the Building Act. For overseas manufacturer details, where applicable, please refer to [hydrapanel.co.nz](http://hydrapanel.co.nz).



# Panels

## FULL SHEET

### FLUSHFIT

2400 x 1200 x 7.6mm

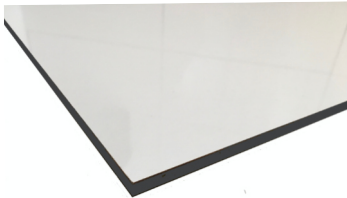
HPFF-24W

2700 x 1200 x 7.6mm

HPFF-27W

3000 x 1200 x 7.6mm

HPFF-30W



## BLOCK STACK

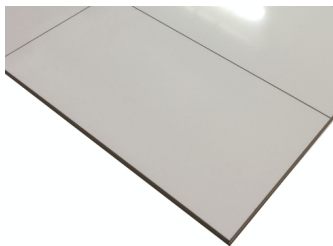
TILE 600 x 300 pattern

2400 x 1200 x 7.6mm

HPTP-V24

3000 x 1200 x 7.6mm

HPTP-V30



## OFF SET

SUBWAY TILE - 300 X 100 pattern

2400 x 1200 x 7.6mm

HPSW-H24

2400 x 1200 x 7.6mm

HPSW-V24

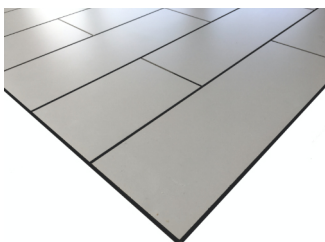
3000 x 1200 x 7.6mm

HPSW-H30

HERRINGBONE - 300 X 100 pattern

2400 x 1200 x 7.6mm

HPHB-V24



V = pattern vertical / portrait  
 H = pattern horizontal / landscape  
 Flushfit groove to 2 x long edges  
 Face - HPL Gloss white  
 Back - HPL Matt white

# Decors



**TAUPE WEAVE - 7575LM**

2400 x 1200 x 7.6mm HPFF-24TPW

3000 x 1200 X 7.6mm HPFF-30TPW



**TAN WEAVE - F6444LM**

2400 x 1200 x 7.6mm HPFF-24TAN

3000 x 1200 X 7.6mm HPFF-30TAN



**STONE - T5308A6**

2400 x 1200 x 7.6mm HPFF-24STN

3000 x 1200 X 7.6mm HPFF-30STN



**ASH - 6055NT**

2700 x 1200 x 7.6mm HPFF-27ASH

3000 x 1200 X 7.6mm HPFF-30ASH



**WALNUT - 8884NT**

2700 x 1200 x 7.6mm HPFF-24WNT

3000 x 1200 X 7.6mm HPFF-30WNT

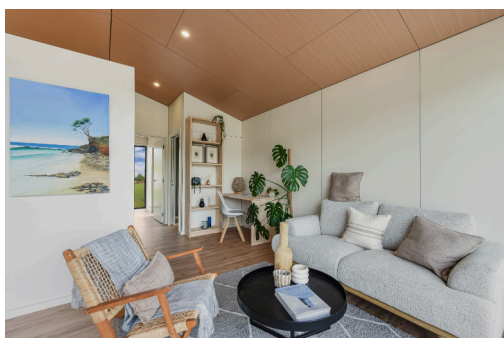


**BONE - 0933**

2400 x 1200 x 7.6mm HPFF-24BNE

2700 x 1200 x 7.6mm HPFF-24BNE

3000 x 1200 X 7.6mm HPFF-30BNE



## FULL SHEET

Hydrapanel™ Flushfit

Flushfit groove to 2 x long edges

Face - HPL various decors

Back - HPL Bone 0933

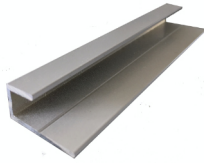
# Jointers

## Aluminium Jointers

### End Cap

2400 x 8mm EC24

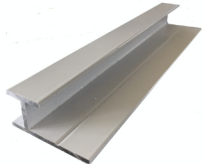
3000 x 8mm EC30



### Standard Jointer

2400 x 8mm SJ24

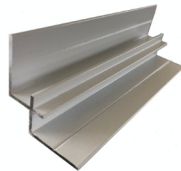
3000 x 8mm SJ30



### Internal Corner

2400 x 8mm IC24

3000 x 8mm IC30



### External Corner

2400 x 8mm XC24

3000 x 8mm XC30



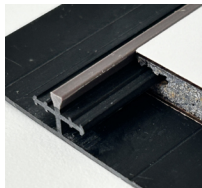
## PVC Jointers

### FLUSHfit Jointer

2400 x 2mm White FFW24

3000 x 2mm White FFW30

2400 x 2mm Grout FFG24

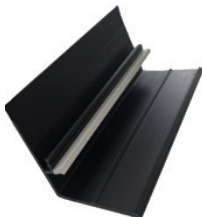


### FLUSHfit Internal Corner

2400 x 2mm White FFCW24

3000 x 2mm White FFCW30

2400 x 2mm Grout FFCG24



Aluminium finish - powdercoated appliance white

# Scope

Hydrapanel™ Lining products can be fixed directly to Steel and also timber frame constructions.

Standard sheets are produced in white with one side GLOSS and the other side MATT finish .

## **Timber Framing**

Studs must be placed at 600mm maximum centres for 1200 wide sheets and 450 wide centres for 900 wide sheets, with nogs and top and bottom plates at 1200mm maximum centres.

For ceilings, battens should be spaced at 400mm minimum centres.

Timber support faces must be straight, flush, in alignment and the bonded surfaces must be dry and clean.

Moisture content of support surfaces must be less than 18% moisture content and must be in accordance with NZS 3604.

Hydrapanel Lining products can be affixed directly to existing wall linings such as plasterboard.

Stainless steel screws must be used when fixing to and or through Hydrapanel.

## **Lined Walls and ceilings**

Surfaces, such as plasterboard must be flat, sound and suitably fixed.

Concrete, Masonry or brick walls and ceilings

Ensure concrete, masonry is dry and seal if necessary.

Timber battens must be fixed as follows;

For 1200mm panels, battens are spaced horizontally and vertically at 600mm centres.

For 900mm panels, battens are spaced horizontally at 600mm and vertically at 450 centres.

For ceilings, battens are spaced at 400mm centres.

Battens / strapping must have DPC between the timber and concrete surface.

## **Shower linings**

Old shower linings must be removed, framing and plumbing must be inspected to ensure items are fit for covering.

## Fixing with Adhesives

Hydrapanel™ Lining panels are easy to install using polyurethane based construction adhesives.

Hydrapanel™ Lining panels can be installed using Hydrapanel proprietary Aluminium and PVC jointers.

Hydrapanel™ Linings can also be installed edge to edge with a silicon joint between the panels.

Hydrapanel™ Linings can be installed combined with double sided tape to be used to hold the sheets in place while the adhesive sets or the sheet can be braced for approx 24 hours to allow for full adhesive cure and adhesion.

When using tape with jointing strips, do not apply tape on the stud where the jointer is located, as this will not allow for the Hydrapanel™ lining sheet to slide into the jointer section.

Construction adhesives should be used in accordance with this guide and manufacturers instructions.

Recommended adhesives;

- Selleys 650FC ( formerly ARMOURFLEX FC )
- Gorilla FIX ALL HIGH TACK
- Würth PUR CONSTRUCTION ADHESIVE RAPID

Materials Required

- Selleys 650FC adhesive
- Hydrapanel double sided foam tape or similar (optional)
- Selleys Ply cleaning wipes
- Screws / nails
- Silicone sealant and masking tape
- Edge sealer
- Lint free cloths
- Packing blocks - minimum 10mm

Tools Required

- Cartridge Gun
- Sharp blade knife
- Circular saw / Table saw
- Battery or power drill
- Level
- Sanding block

## Preparation

- Check all walls and ceiling and floor intersections are square.
- Check framing is dry, all timber and sheet surfaces are clean and free of contaminants .
- Check framing is straight, flat and level across the face surface.
- Measure and mark sheet positions to centres of corresponding framing, if using jointers allow tolerances of +2mm for the panels to fit easily between.
- We recommend using full sheets in the centre and cut sheets at wall junctions.
- Sheets are gloss on one side and matt on the other - gloss side has the Hydrapanel label.

## Cut and prepare sheets

Measure panel sizes from top and bottom of the wall to determine panel width.

- Using a straight edge, cut the panels to suit, using either a table saw, circular saw, hand saw or router.
- Remove the plastic protection from the back side of the sheet if fitted.
- Remove the protective plastic film 60mm from each edge on the front face, DO NOT remove all of the film from the face until the panels are completely installed.
- Smooth finish the edges of the sheets with a planer or a block with 200 grit sandpaper.
- Mark and cut out for penetrations.
- **Seal edges of all penetrations with Selleys wet area silicon sealant or similar**

## Adding an Edge Groove

If an edge groove is required to be added to a cut sheet edge, this can be done using the following method.

- Use a small trim router ( 1/4 inch collets )
- Fit a 2.5mm draft strip cutter ( Linbide Weather Strip Grooving )
- Set the height from a factory groove edge ( set to centre of panel edge )
- Carefully run the router along the panel edge

## Installation using adhesive with standard aluminium or PVC jointers

### Option 1 - Aluminium Jointers

- Ensure that you have a clean and prepared surface to work with.
- Ensure the timber/steel framing that you are going to overlay is clean and free from contaminants.
- Fix the first jointer to the stud – screw or pin (see tip below) .
- Fix second jointer to Right hand side of first sheet.
- Use sealant in jointers if using in wet areas.
- Remove the plastic protection from the back side of the sheet if fitted.
- Apply a continuous bead of Selleys 650 FC Adhesive 5mm x 5mm.
- If Hydrapanel™ Double Sided Tape is used, (positioned approx 25mm from the edge of the tape).
- Ensure the reverse side of the Hydrapanel Lining ( surface that is going against the timber/steel framing or wall) is clean and free from contaminants.
- Fit the edge of the sheet into the jointer and press the panel against the adhesive on the framing whilst packing the sheet of the floor / base with 10mm packers.
- Roll or press firmly over all areas of the Framing or Wall to ensure that the adhesive is compressed to a point where the Hydrapanel™ is in full contact with the adhesive. Prop sheets if required.
- Screw the jointer attached to the sheet to the corresponding timber frame.
- Repeat this process until finished.
- Leave finished Hydrapanel™ lined a full 24hours for the adhesive to cure before carrying out further work in the area/room being lined with Hydrapanel™
- Apply silicone sealant to all penetration edges after sheets have been fixed.
- Remove masking tape whilst the silicone is still wet. (do not touch the silicone with skin as this can promote mould growth).
- When installing in a 3 sided shower, fix the centre sheet with jointers attached to both sides of the sheet first.
- Double sided tape can also be used to hold the sheets in place while the glue dries ..... please note however that the use of tape will not allow the panel to be moved or slid into position, care must be taken if using tape that the panel is in position before it is pressed to the wall / stud.
- HANDY TIP - When screw fixing aluminium jointers, use 6 g x 30mm screws / pilot drill hole with 1/4inch drill bit, this will allow the 6 gauge screw to countersink and sit flush with the aluminium edge.

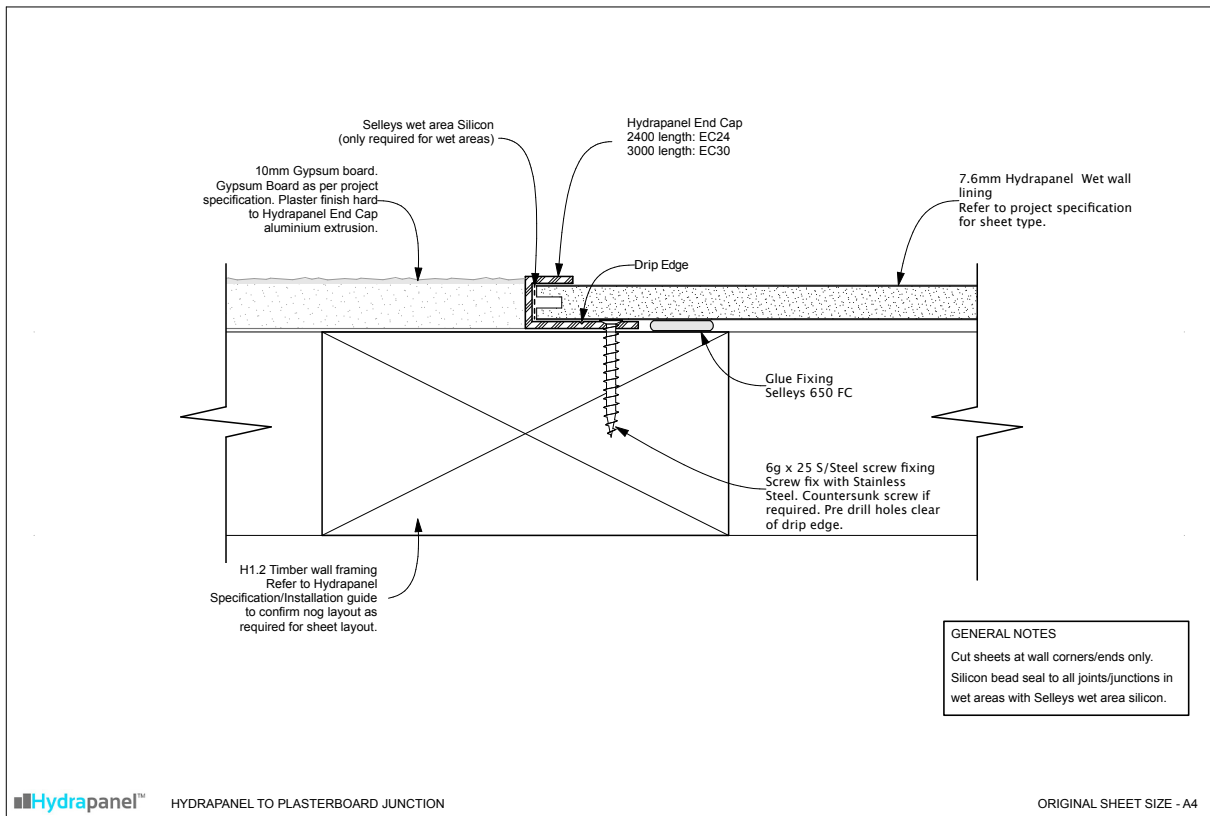
## **Option Two - Flushfit Jointers**

- Hydrapanel has a 2mm grooved edge on the long edges to take a flushfit jointer section.
- This allows the panels to be installed with a flush 2mm PVC gap between each sheet.
- The jointer has a soft PVC edge that bridges the gap.
- Use sealant in jointers if using in wet areas.
- As an option, this gap can also be left as a negative detail or can be filled with a flexible sealant / silicon to fill the joint by removing the soft PVC edge on the flushfit jointer.

## **Installation using adhesive and silicone, in dry areas without jointers**

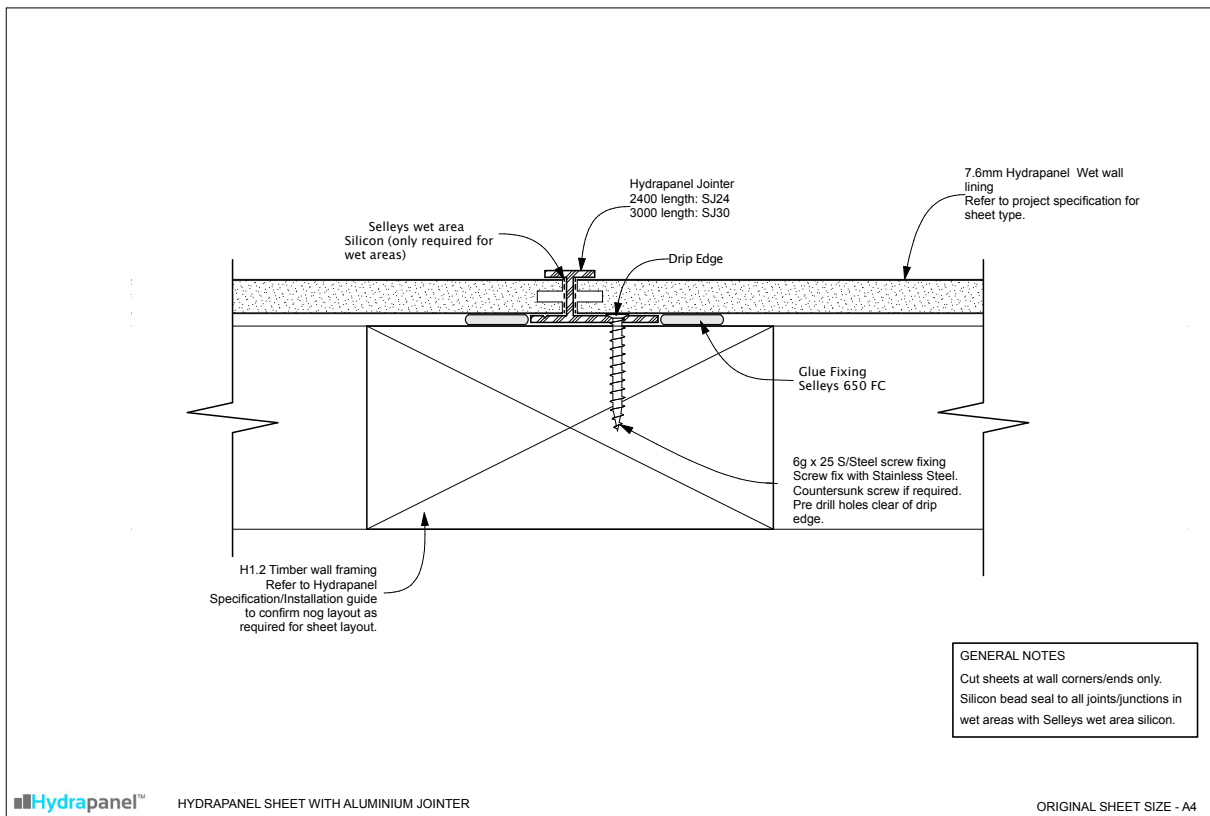
- Remove the plastic protection from the back side of the sheet if fitted.
- Position Hydrapanel™ Foam Double Sided Tape to stud in centre position of the panel.
- Apply a continuous bead of Sellys 650 FC Adhesive 5mm x 5mm to framing (positioned approx 25mm from the edge of the double sided tape).
- Roll or press firmly over all areas of the Framing or Wall to ensure that the adhesive is compressed to a point where the Hydrapanel™ is in full contact with the Double Sided Tape, whilst packing the sheet of the floor / base with 10mm packers.
- Position corresponding sheets with a continuous joint of 2 - 4mm depending on gap specification.
- Hold sheets in place with Nail blocks, Prop sheets if required.
- Repeat this process until finished.
- Leave finished Hydrapanel™ lined a full 24hours for the adhesive to cure before carrying out further work in the area/room being lined with Hydrapanel™
- Once adhesive has cured, remove nail blocks.
- Remove 60mm of the protective film from each edge of the panels.
- Apply masking tape to the panel edges and apply silicone sealant to the gap between the panels.
- Apply silicone sealant to all penetration edges after sheets have been fixed.
- Remove masking tape whilst the silicone is still wet. (do not touch the silicone with skin as this can promote mould growth).

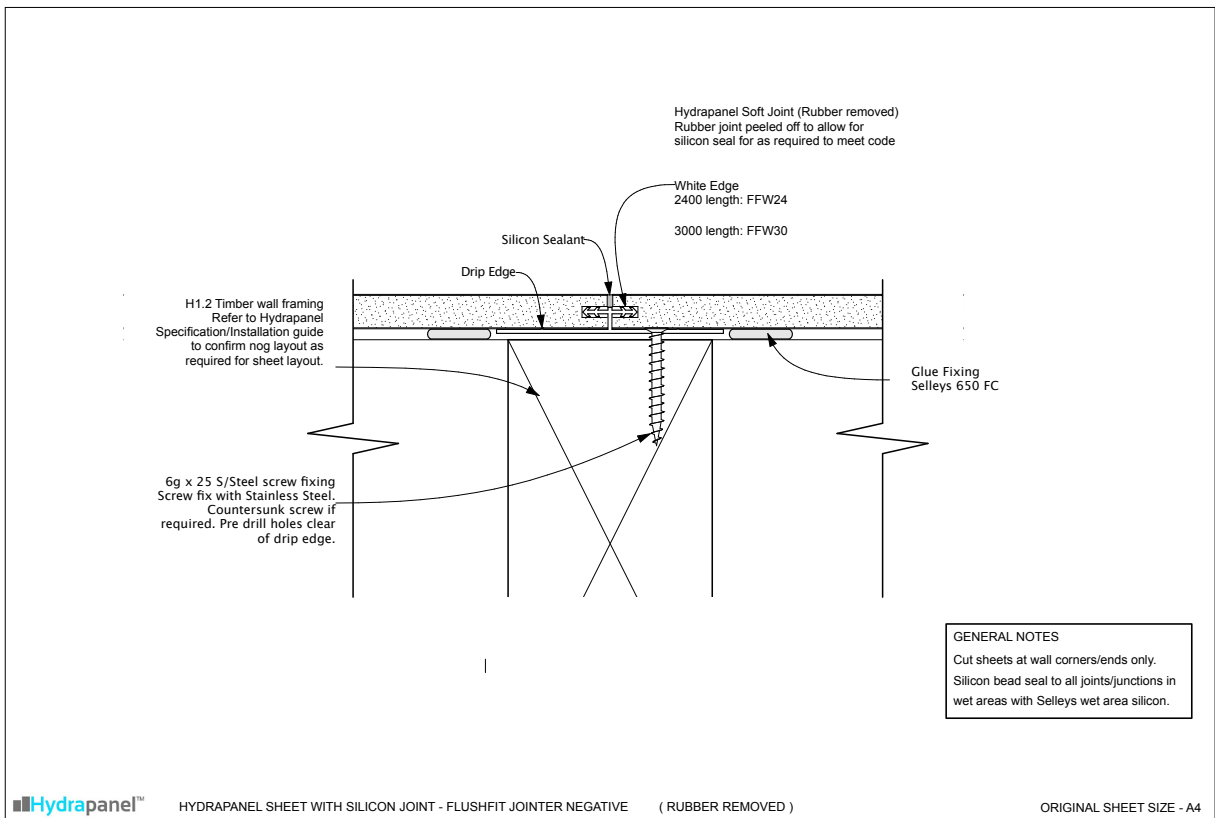
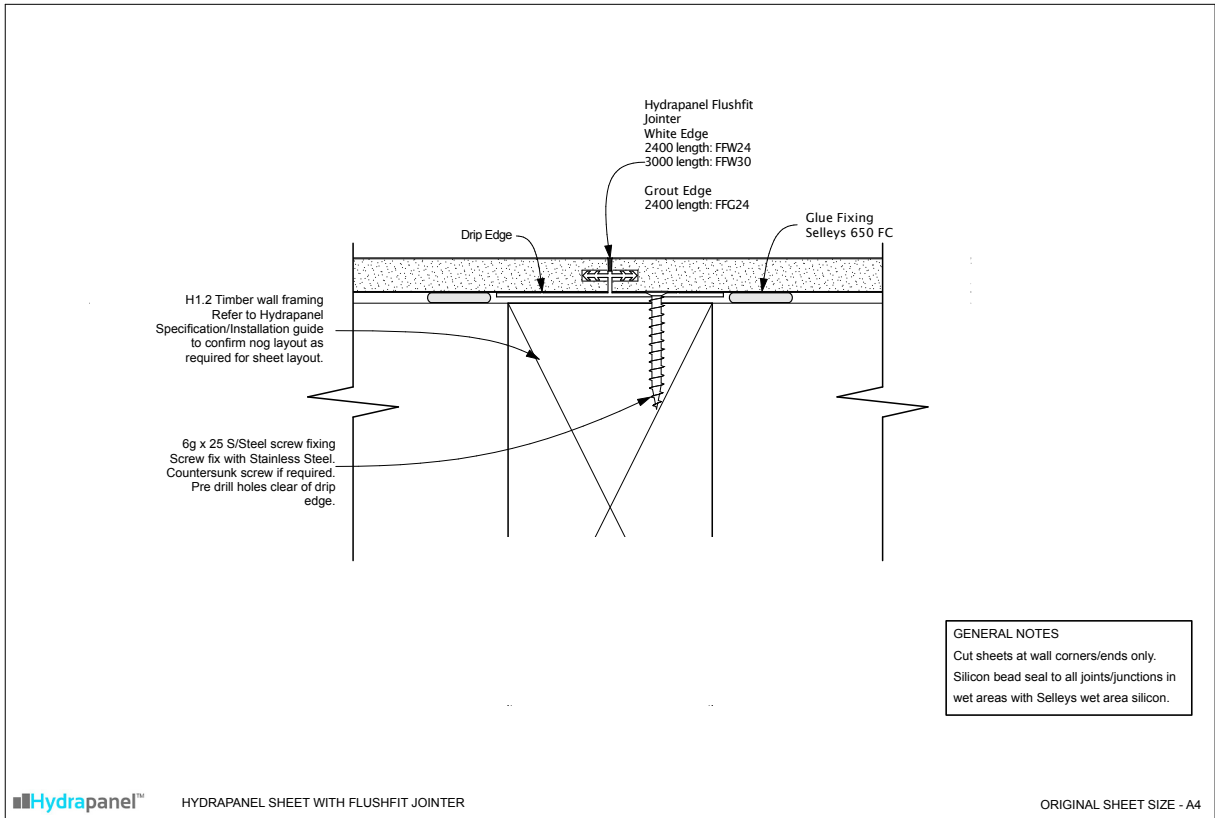
# WALL AND CEILING JUNCTIONS

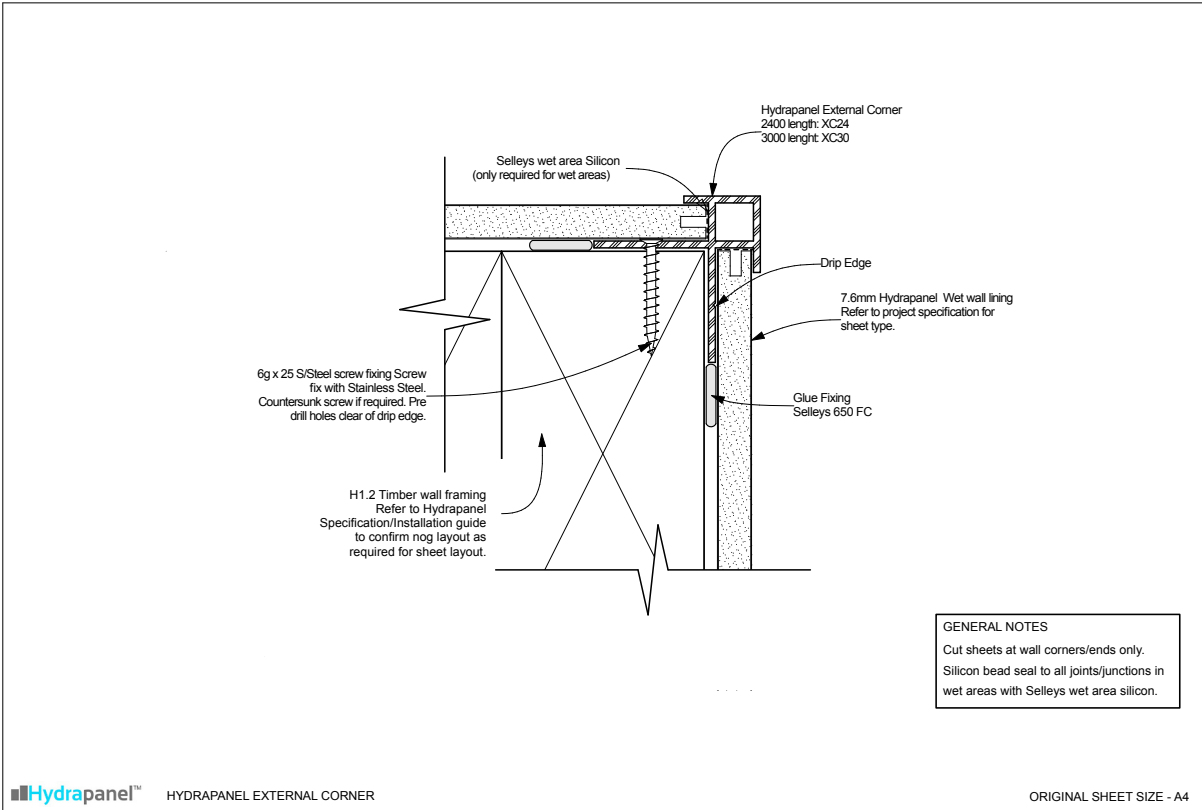
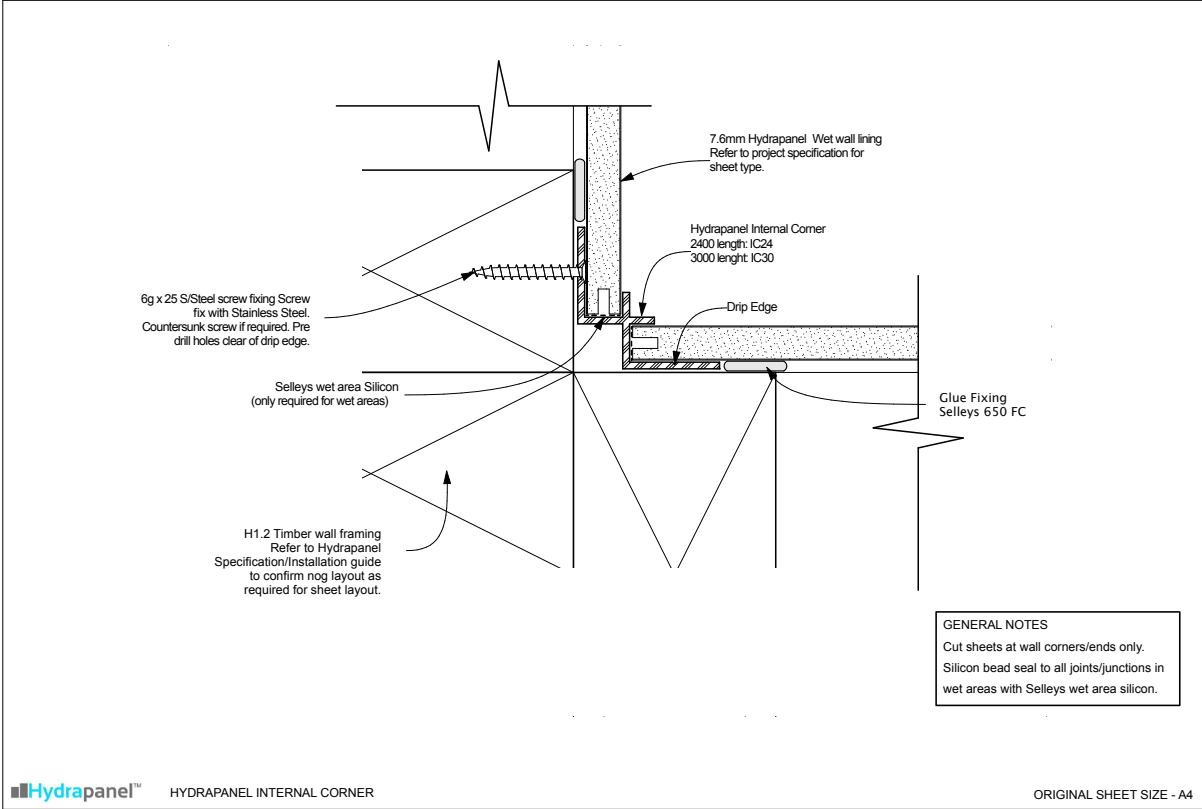


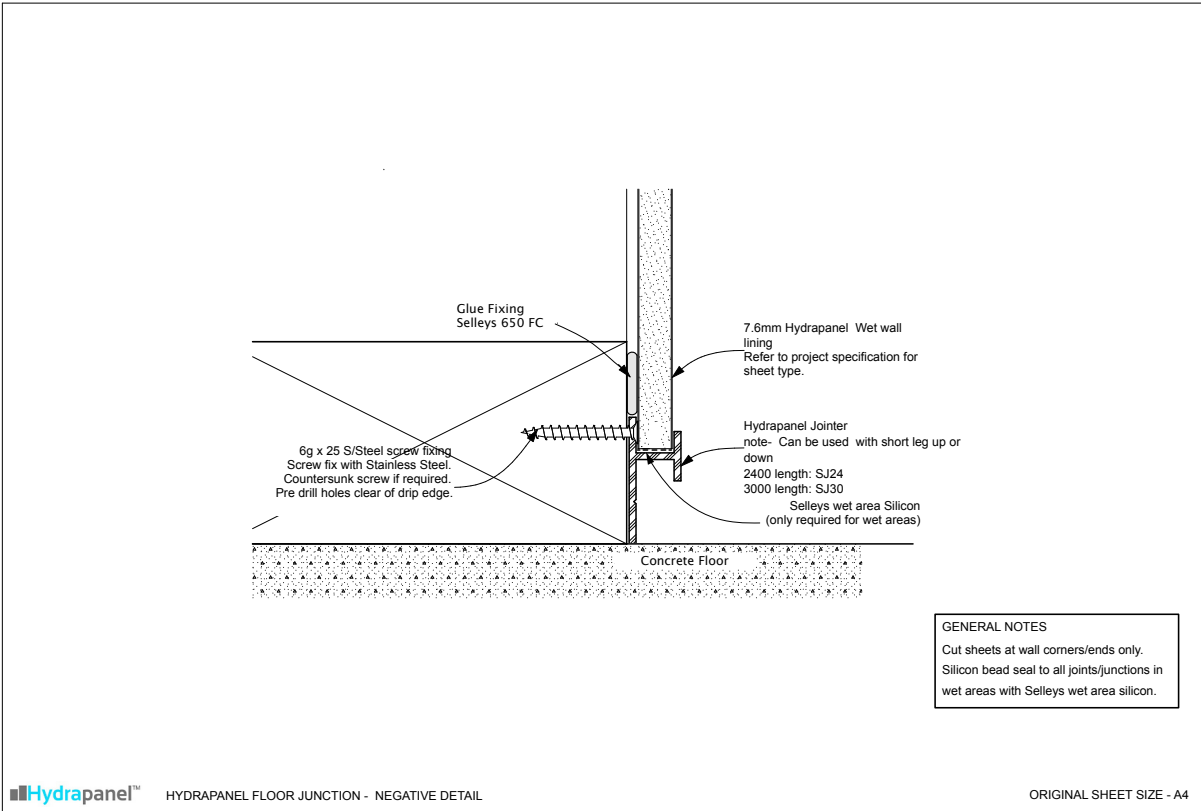
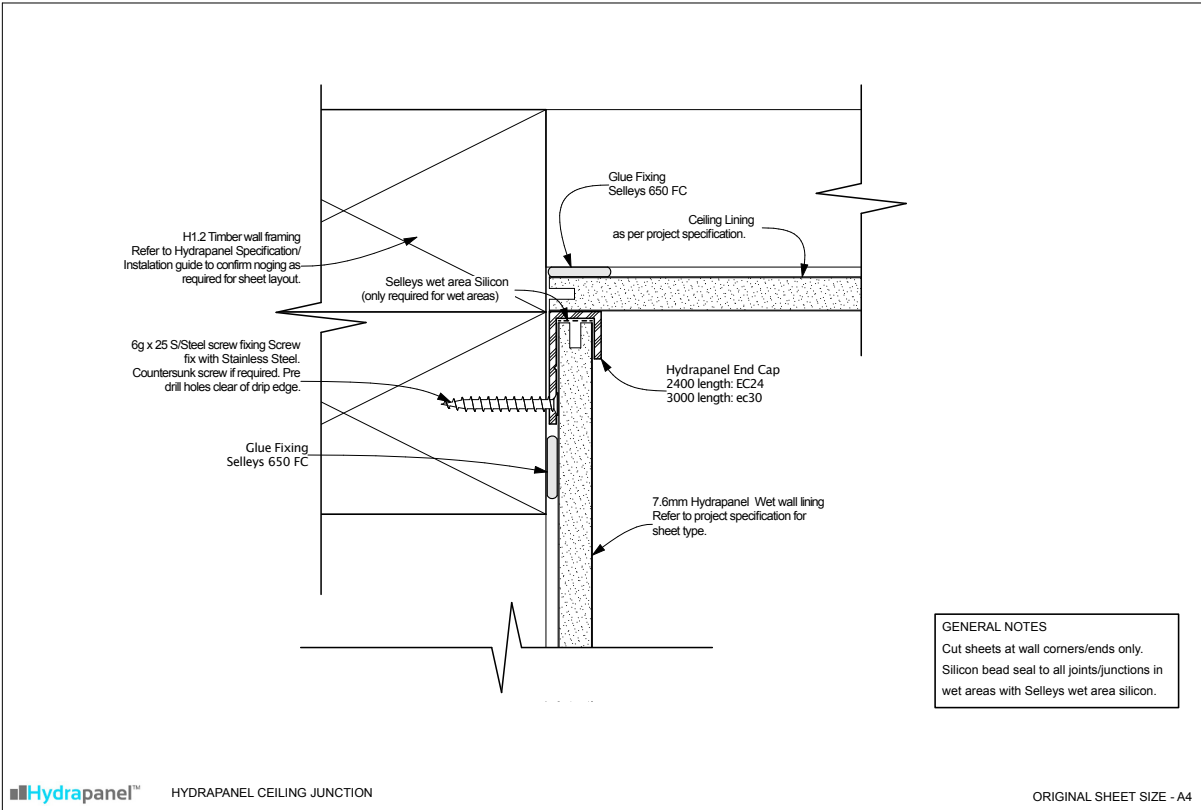
Cut vertical jointers to fit as required - all horizontal jointers should be full length

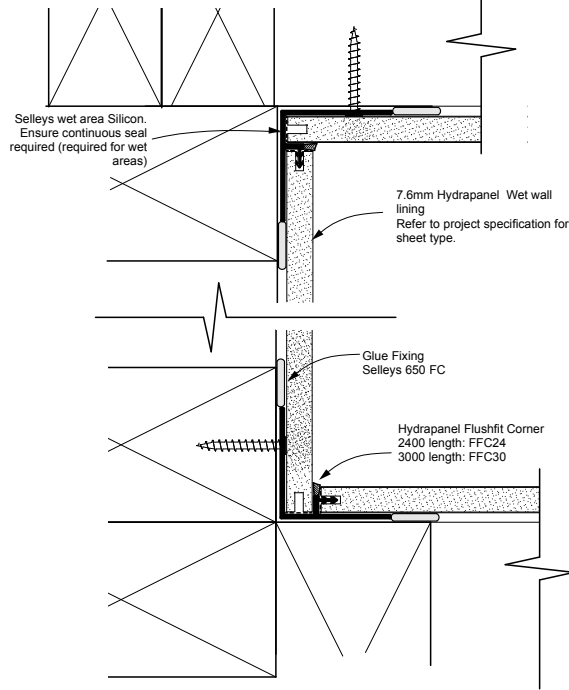
For showers and wet areas all jointers including corners and caps must be filled with flexible silicone sealants.





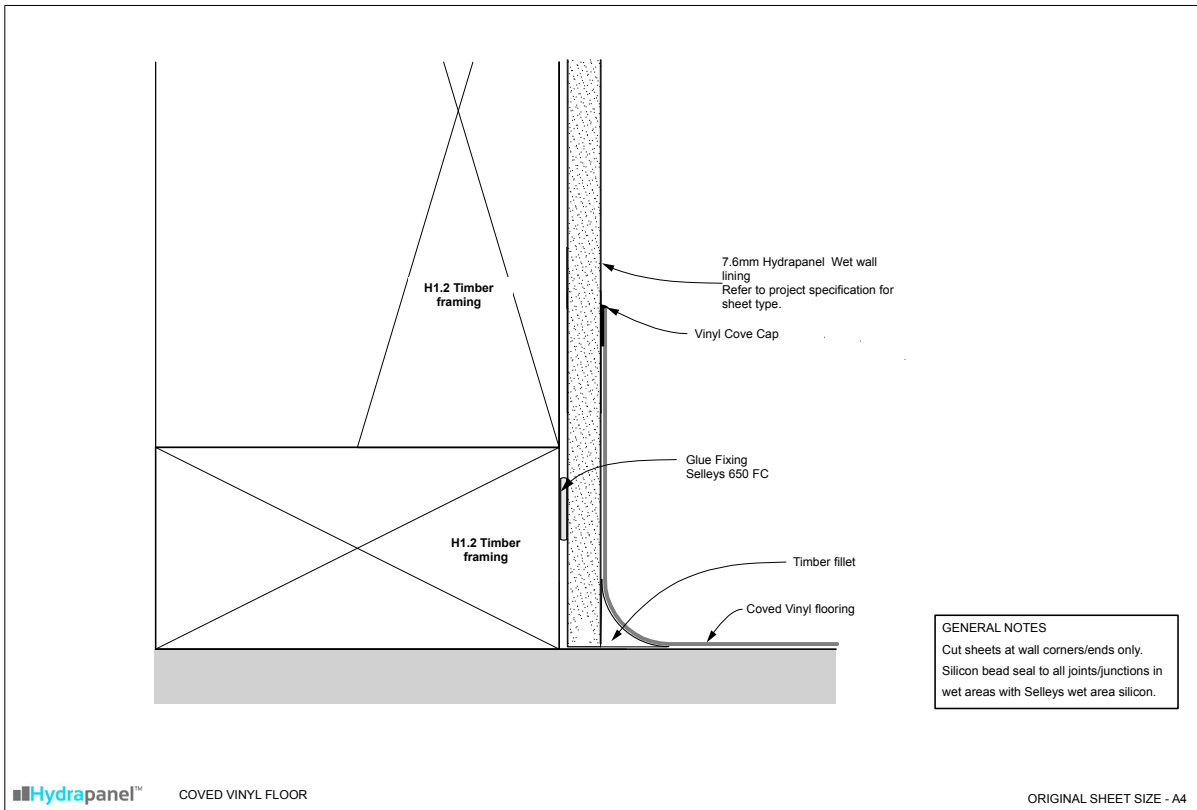
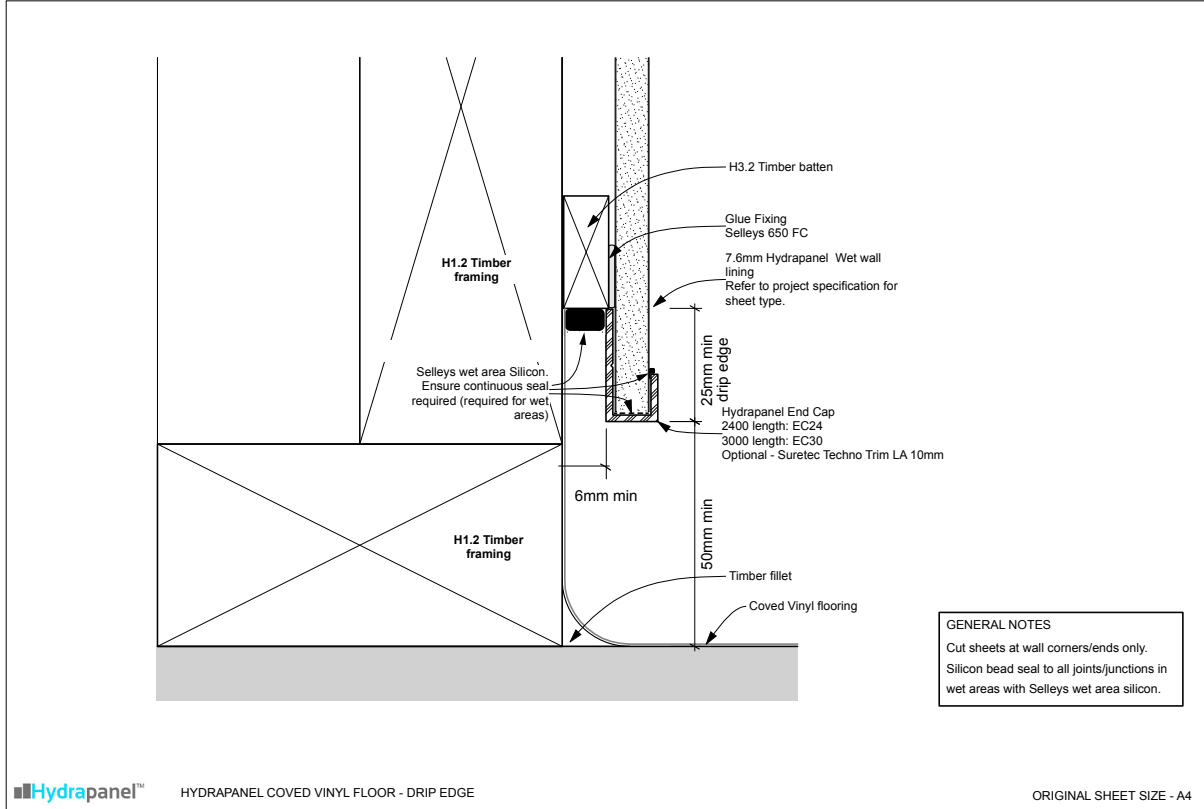


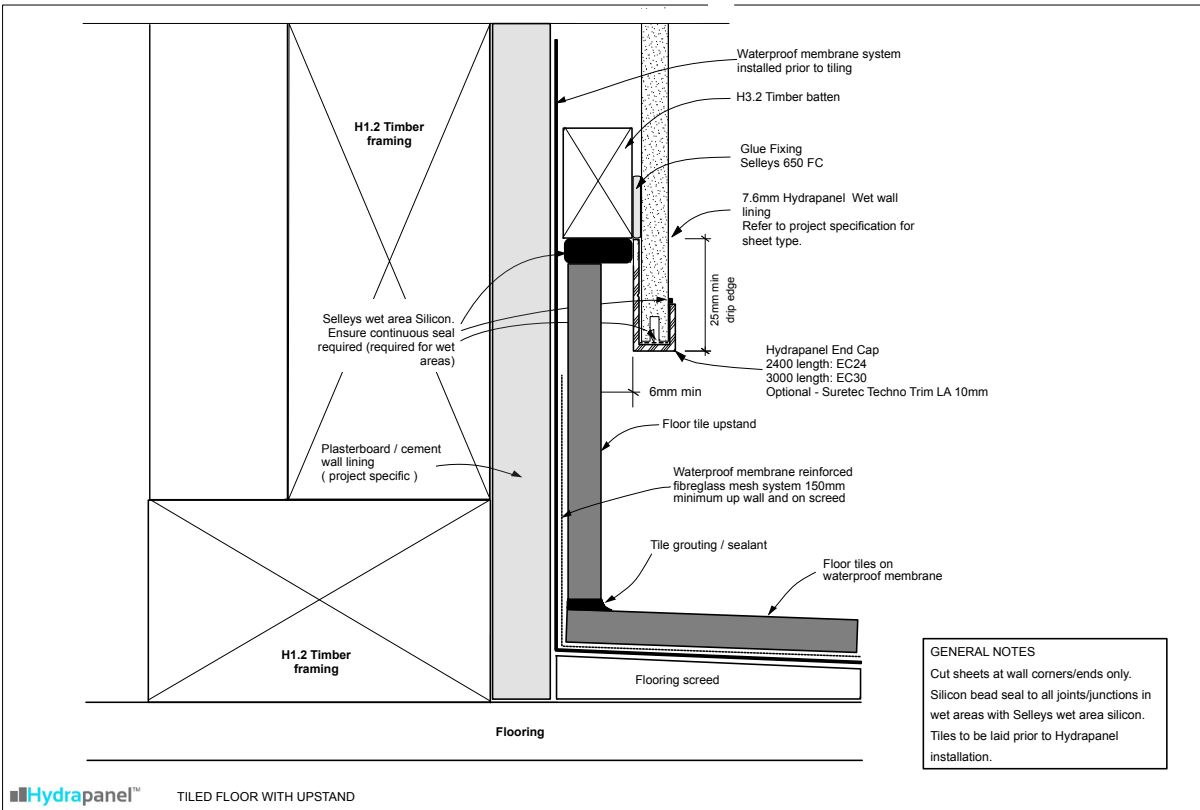
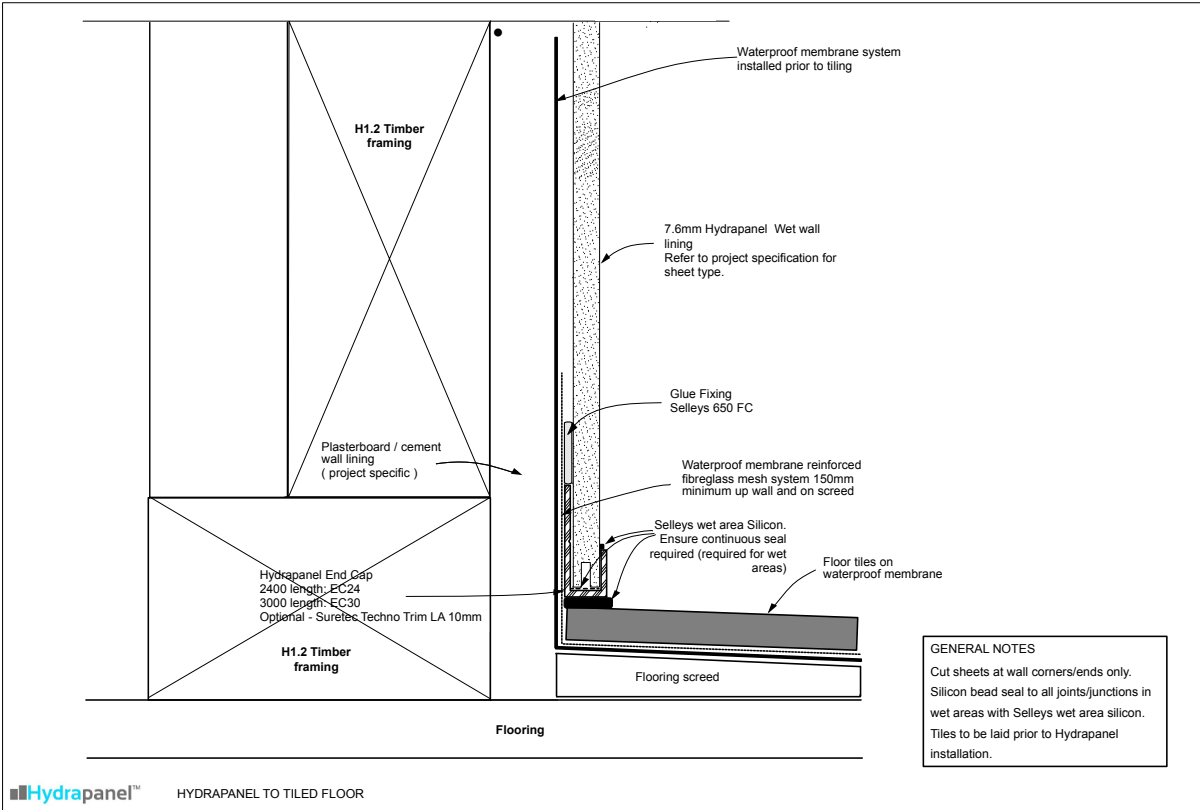


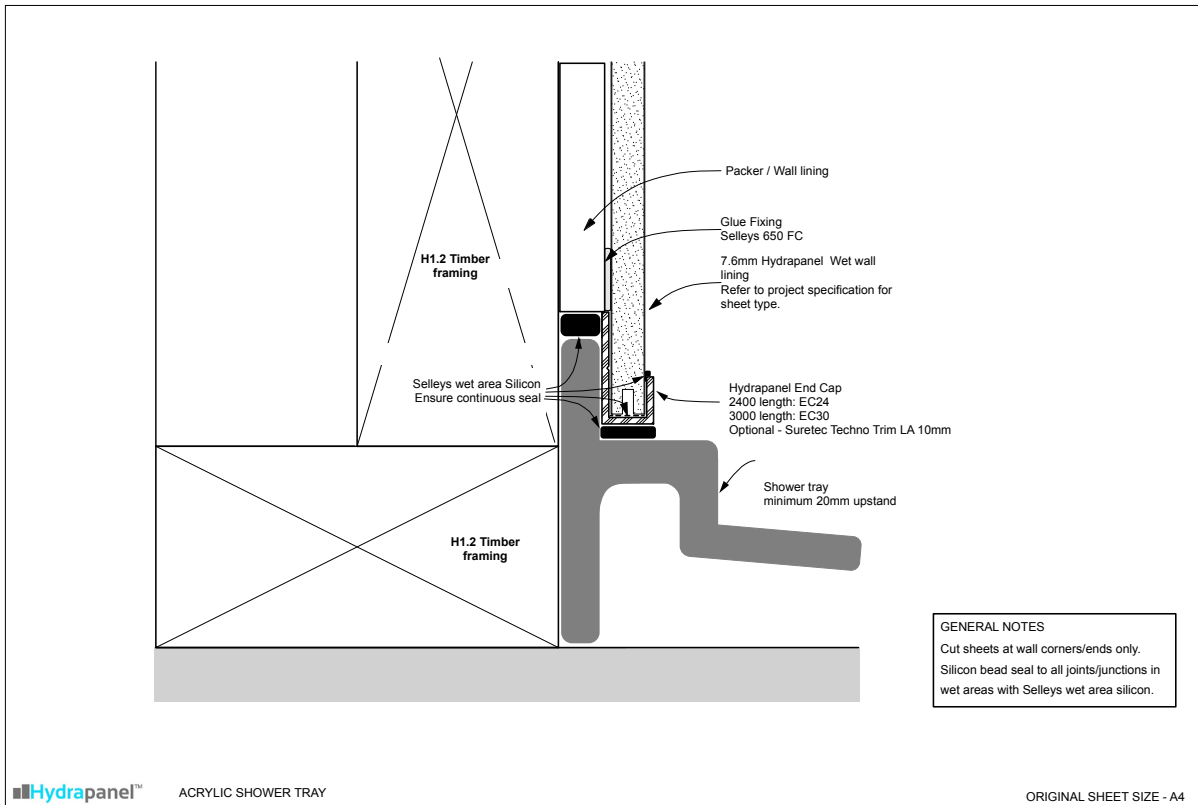
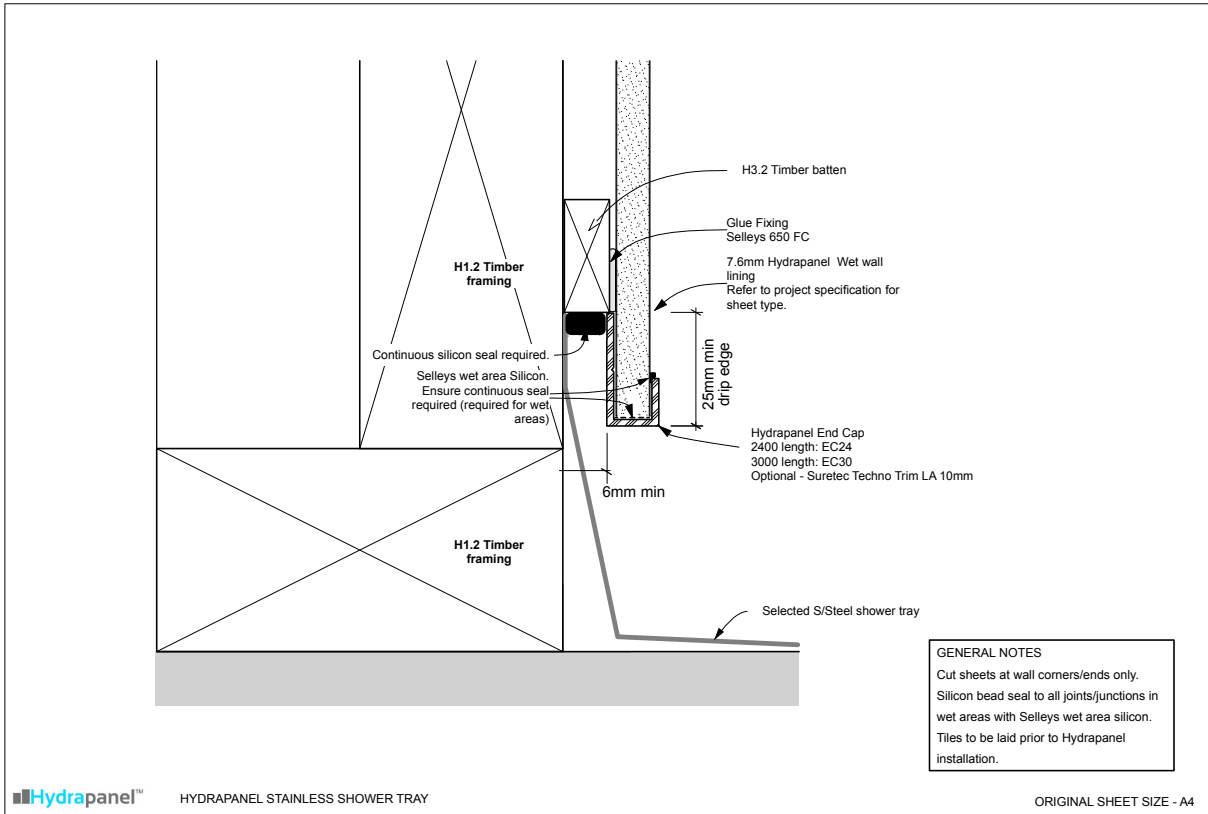


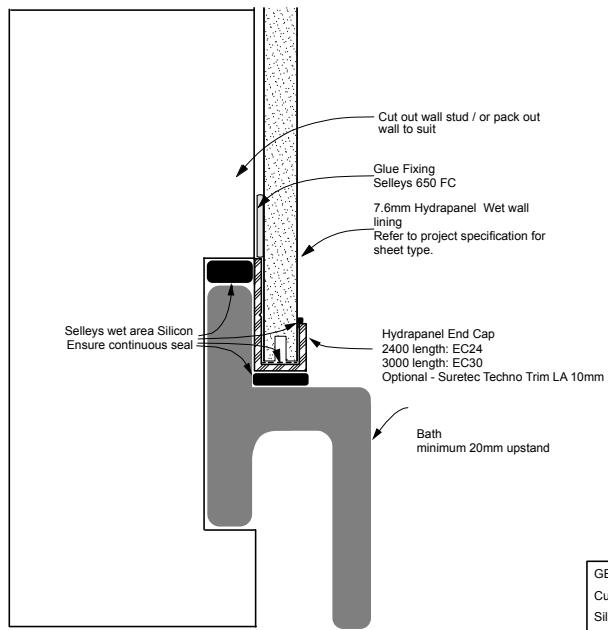
GENERAL NOTES  
 Cut sheets at wall corners/ends only.  
 Silicon bead seal to all joints/junctions in wet areas with Selleys wet area silicon.

# WET AREA WALL AND FLOOR JUNCTIONS









GENERAL NOTES  
 Cut sheets at wall corners/ends only.  
 Silicon bead seal to all joints/junctions in wet areas with Selleys wet area silicon.

## SPLASHBACKS

Hydrapanel™ Linings are suitable to be used as a splash back behind gas and electric cook tops;

Warning:

For electric cook tops - A distance of at least 100mm must be kept from the outer ring of the nearest heating element.

For gas cook tops - A distance of at least 200mm must be set from the closest outer ring of the hob.

All installations of Hydrapanel must be in accordance with the cook top manufacturers recommendations.



## **MAINTENANCE**

Hydrapanel™ Linings are moisture resistant panels, however the sheets must be installed and maintained to resist water penetration.

Care must be given to joints and penetrations and these must be maintained to ensure that no water can penetrate to the framing.

Hydrapanel™ Linings are finished in High Pressure Laminate, the cleaning of HPL should be with non abrasive cloths and non abrasive cleaners such as spray and wipe.

To remove stubborn stains and adhesive residues solvent thinners can be used with a cotton cloth.

Note; when handling products containing hazardous solvents the following precautions should be taken:

- plastic gloves and glasses to be worn
- keep windows open and aerate the room / area
- do not use around heat sources

## **STORAGE AND HANDLING OF SHEETS**

Long term storage of the sheets must be under cover on evenly spaced bearers (500mm max) to keep them flat and dry.

Outside storage requires panels to be covered with a breathable waterproof material that allows air to circulate around the panel stack.

**Panels must be lifted and not dragged off the stack.**

## **PACKAGING AND LABELLING**

Panels are protected with a plastic foil membrane attached to the laminate surface.

Panels are packed gloss to matt per pallet / delivery – shrink wrapped with corner protection.

On the panels (one side) is a label giving the production number and date of manufacture, this is also the gloss side of the panel.

Keep a record of the batch numbers when installing Hydrapanel™.

## PANEL SPECIFICATIONS AND TOLERANCES

Panel Size (mm)	Thickness Nominal (mm)	Weight Per panel Kg
2400 x 1200	7.6	26.5
2700 x 1200	7.6	29.8
3000 x 1200	7.6	33.5

Length	+ - 1mm
Width	+ - 1mm
Thickness	+ - 0.2mm
Diagonal	+ - 1mm

Substrate Properties	
Density	1.0 t/m3
Moisture Content	8%
Bending Strength	20 Mpa
Water Swelling	0.34%
Dry Shrinkage	0.29%
Impact Strength	8 J/m2
Screw Withdrawal	80 N/mm



## WARRANTY GENERAL TERMS

This warranty applies to Hydrapanel Linings supplied by Hydrawood Flooring Systems Ltd when used in accordance with all Hydrawood Flooring Systems requirements.

This warranty is to be read in conjunction with all relevant and applicable technical documentation published or referenced by Hydrawood.

Date warranty valid:

15 years from proven date of purchase or dispatch from Hydrawood Flooring Systems whichever is the earlier.

All enquiries relating to this warranty must (in the first instance) be directed to the place of purchase, the supplier or the installer.

Hydrawood Flooring Systems warrants that:

At the time of delivery to the merchant or site (where applicable) the Hydrapanel Linings will:

- be free from freight-related defects
- be free from defects that may have arisen through defective factory workmanship or materials
- conform to the performance characteristics listed on the current Hydrapanel pass™ ('warranted condition').

In the event a breach of the warranty is proven, the following applies:

- Hydrawood Flooring Systems will, at its discretion, supply replacement Hydrapanel Linings without charge or refund the value of the product.
- Other losses or damage caused by a breach of the warranty or failure of the product for any other reason are not covered.
- Hydrawood Flooring Systems obligations under this warranty are limited to the replacement of defective Hydrapanel Linings or the value of the Hydrapanel Lining. The value of the materials will be reduced pro-rata, based on the remaining life of the product (as set by the relevant durability requirements of the NZ Building Code).
- Hydrawood Flooring Systems reserves the right to supply other comparable materials should the warranted materials no longer be supplied by Hydrawood Flooring Systems.
- This warranty is subject to the following:
  - Receipt of date of purchase of the product.
  - Evidence satisfactory to Hydrawood Flooring Systems of failure of the Hydrapanel Lining.
  - Receipt of a written claim from the claimant either within 30 days of when the defect would have become reasonably apparent or, if the defect was reasonably apparent prior to installation, then the claim must be made prior to installation.
  - The claim must include full details of the alleged defect.
  - Evidence satisfactory to Hydrawood Flooring Systems that all maintenance requirements have been carried out.
  - The warranty does not cover failure or problems caused by defective use; failure relating to improper design of the project structure; structural failure; settlement; movement of materials to which the product is attached or dependent on; acts of God
  - including but not limited to earthquakes, cyclones, floods or other severe weather conditions; inadequate maintenance; growth of mould, mildew, fungi, bacteria or any organism on any product; or acts or omissions of a third party over whom Hydrawood Flooring Systems has no control.
- The warranty does not cover failure or loss arising from the failure to follow all relevant Hydrawood Flooring Systems advice and requirements.
- Normal wear and tear is excluded from this warranty.
- This warranty applies to the first purchaser of the product and is not transferable.
- All relevant information is available from Hydrawood Flooring Systems (refer to [www.hydrapanel.nz](http://www.hydrapanel.nz)).



Always follow these instructions when installing Hydrapanel